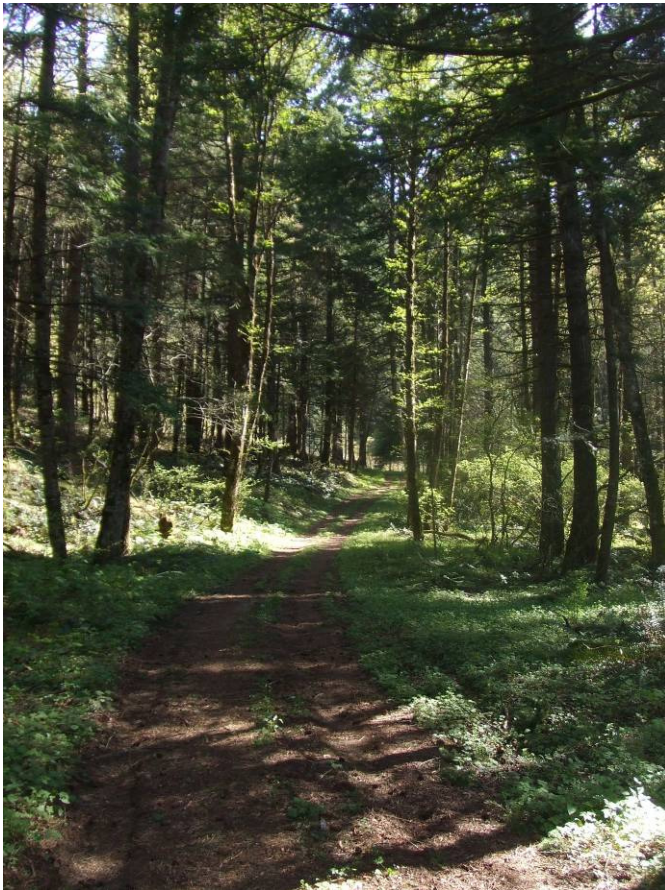


CASCADE LOCKS INTERNATIONAL MOUNTAIN BIKE (CLIMB) TRAIL SYSTEM



The Cascade Locks area has ideal trail potential for year-round mountain bicycle, equestrian, and hiking use. Located in the heart of the Columbia River Gorge within the Cascade Range, Cascade Locks possesses bountiful scenic and recreational opportunities. Environmental conditions such as; soils, vegetation, and temperate climate combine to produce ideal trails which remain in great condition throughout the year.

In 2007, the International Mountain Biking Association (IMBA) was contracted jointly by Hood River County, Port of Cascade Locks and the City of Cascade Locks to prepare a Mountain Bike Feasibility Study and Conceptual Trail Plan for Cascade Locks. Due to the substantial demand for trails closer to Portland, Oregon, a destination mountain bike and mix-use trail system open to equestrians and hikers will contribute significantly to the diversity of the tourism industry in Cascade Locks.

The conceptual plan identified a potential trail of existing roads and trail corridors that could be linked together for a complete 25 mile trail system. The trail would begin in Cascade Locks then split into trails accommodating the beginner to the most advanced mountain bicyclist, hikers, and equestrians.

The Port of Cascade Locks is working with IMBA and Alta Planning + Design to complete a Trails Master Plan. Aside from on the ground design, an important piece of the Master Plan will be identifying user groups for long-term trail maintenance. Identifying groups for trail maintenance removes a burden from the US Forest Service and implies long term commitment from multiple entities.

Thanks to the support of the City of Cascade Locks Tourism and Hood River County in-kind support the CLIMB Master Plan is complete and the NEPA process can begin. With the aid of IMBA and Alta Planning the Port will apply for grants to help fund the NEPA review. The total cost of trail completion is estimated to be approximately \$1.5 million. This project has the potential of being the best trail destination in the Pacific Northwest and draw visitors from across America and abroad.

